

- INDEX OF SHEETS
1. TITLE SHEET
 2. BRIDGE PLAN AND PROFILE
 3. BRIDGE TYPICAL SECTION

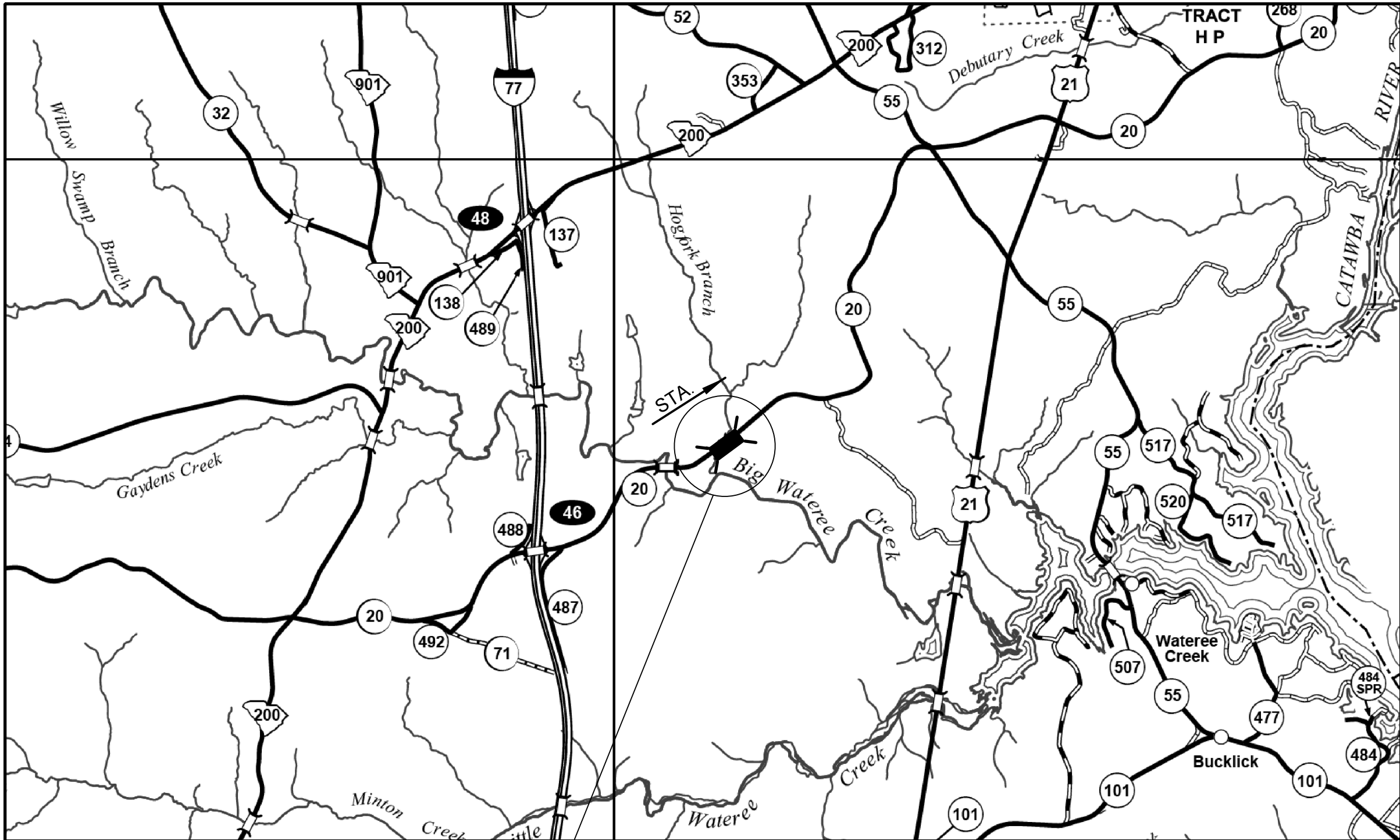


PROPOSED PLANS
FOR
FAIRFIELD COUNTY
PROJECT ID P041958
STATE ROUTE S-20-20 (CAMP WELFARE RD)
REPLACE BRIDGE OVER HOGFORK BRANCH

Design Reference for these plans is the:

LVB

Supplemental Design Criteria For
Low Volume Bridge Replacement Projects



Approximate Location of Bridge is
Latitude 34°-29'-03" N
Longitude 80°-58'-16" W

SITE LOCATION LAYOUT

3 DAYS BEFORE DIGGING IN
SOUTH CAROLINA
CALL 811
SOUTH CAROLINA 811 (SC811)
WWW.SC811.COM
ALL UTILITIES MAY NOT BE A MEMBER OF SC811

ASSET ID NOT ASSIGNED

NET LENGTH OF ROADWAY	0.000	MILES
NET LENGTH OF BRIDGES	0.015	MILES
NET LENGTH OF PROJECT	0.015	MILES
LENGTH OF EXCEPTIONS	0.000	MILES
GROSS LENGTH OF PROJECT	0.015	MILES

CONSULTING ENGINEERING FIRM

HNTB
HNTB CORPORATION
SC License No. 265
343 E. Six Forks Rd., Suite 200, Raleigh, N.C. 27609

ENGINEER OF RECORD

**CONCEPTUAL
PLANS
NOT FOR
CONSTRUCTION**

FOR CONSTRUCTION : _____
DATE _____

NOTE: EXCEPT AS MAY OTHERWISE BE SPECIFIED ON THE PLANS OR IN THE SPECIAL PROVISIONS, ALL MATERIALS AND WORKMANSHIP ON THIS PROJECT SHALL CONFORM TO THE SOUTH CAROLINA DEPARTMENT OF TRANSPORTATION STANDARD SPECIFICATIONS FOR HIGHWAY CONSTRUCTION (2007 EDITION) AND THE STANDARD DRAWINGS FOR ROAD CONSTRUCTION IN EFFECT AT THE TIME OF LETTING.

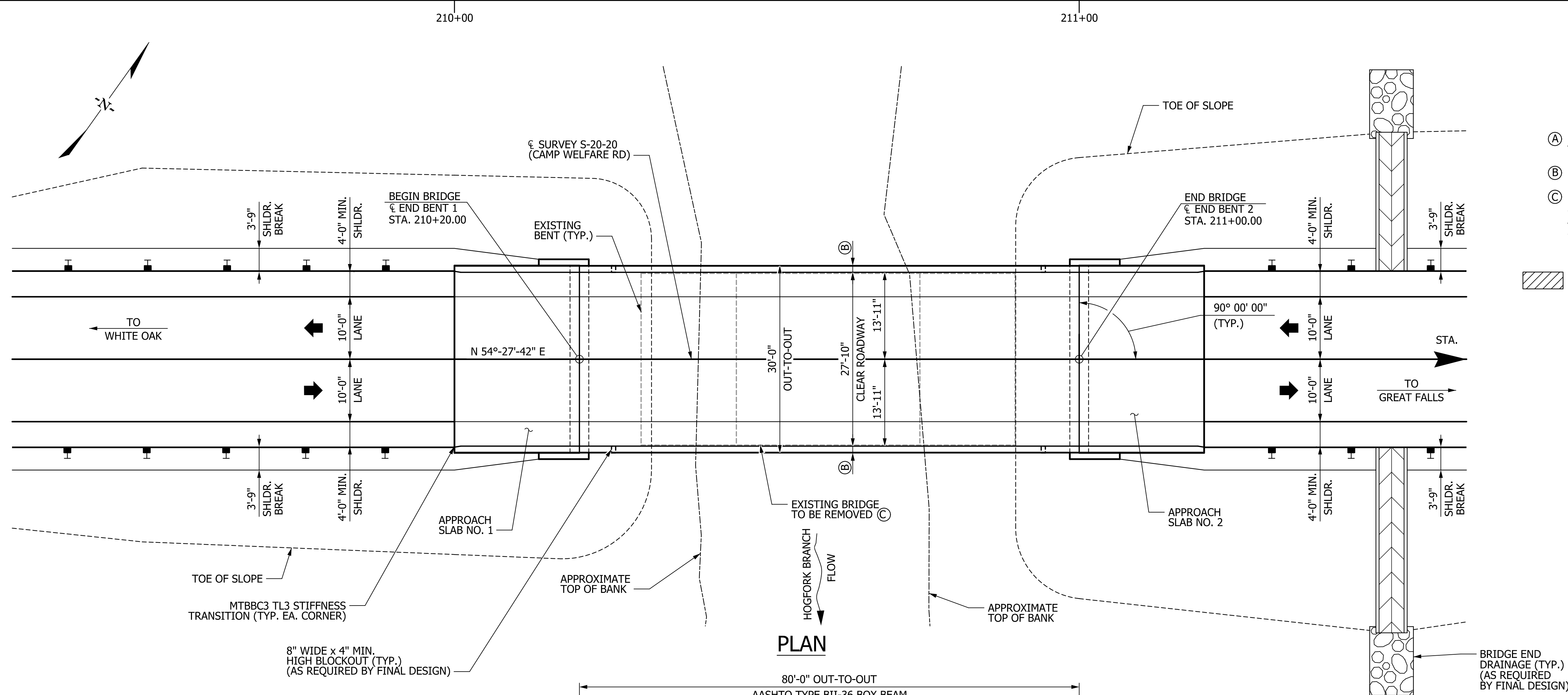
TRAFFIC DATA			
2025	ADT	110	V.P.D.
2045*	ADT	150*	V.P.D.
TRUCKS 16 %			
*DESIGN TRAFFIC DATA			

REVIEWED	DR.	NEW	BY	CHK	DATE
					6/23

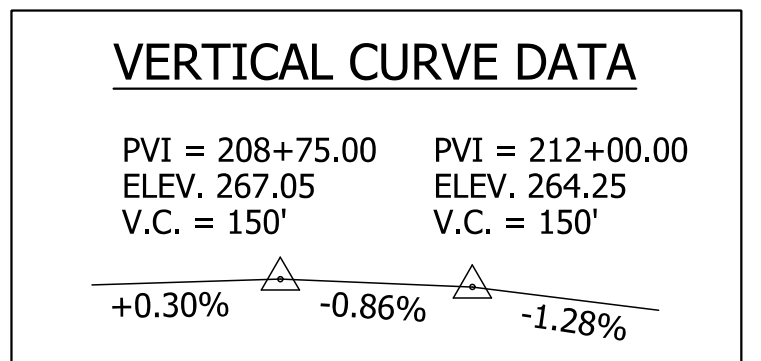
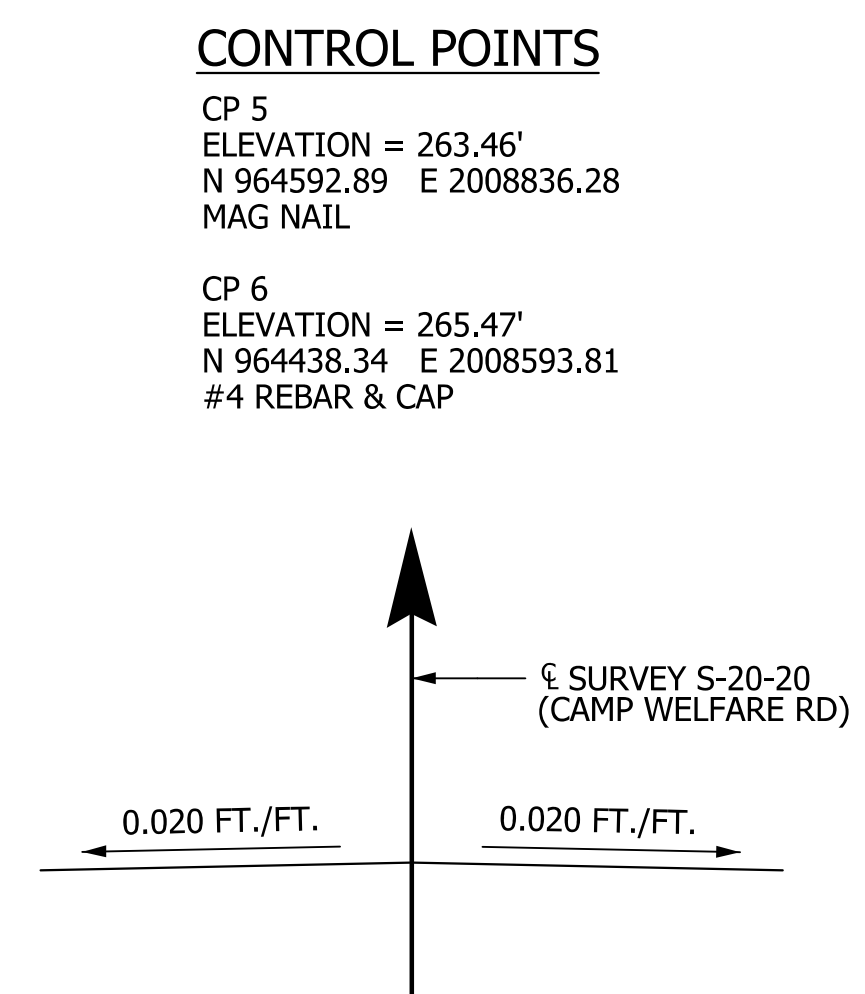
CADD FILE INFORMATION 4:00:40 PM
PLOTTED DATE: 7/5/2023
FILE NAME: ...Prp_001_S-20-20_P041958.ts.dgn

CADD FILE INFORMATION 10-08-03 AM
PLOTTED DATE: 7/6/2023
FILE NAME: ...\\Prep_002.S-20-20-P041958_bp.dgn

BRIDGE PLANS ID	SHEET NO.
P041958	2



- NOTES:
- (A) PROPOSED PROFILE SET SO THAT THE LOW CHORD SATISFIES THE HYDRAULIC REQUIREMENTS, SET FORTH BY THE RFP.
 - (B) INCLUDES 1'-0" MASH BARRIER PARAPET AND 1" SLAB EXTENSION.
 - (C) REMOVE AND DISPOSE OF EXISTING 27'-6" x 60'-0" 3-SPAN SIMPLE CONCRETE SLAB BRIDGE AND APPURTENANCES IN ACCORDANCE WITH SECTION 202.4.2 OF THE STANDARD SPECIFICATIONS.
- F - DENOTES FIXED BEARING
- EXCAVATE HATCHED AREA

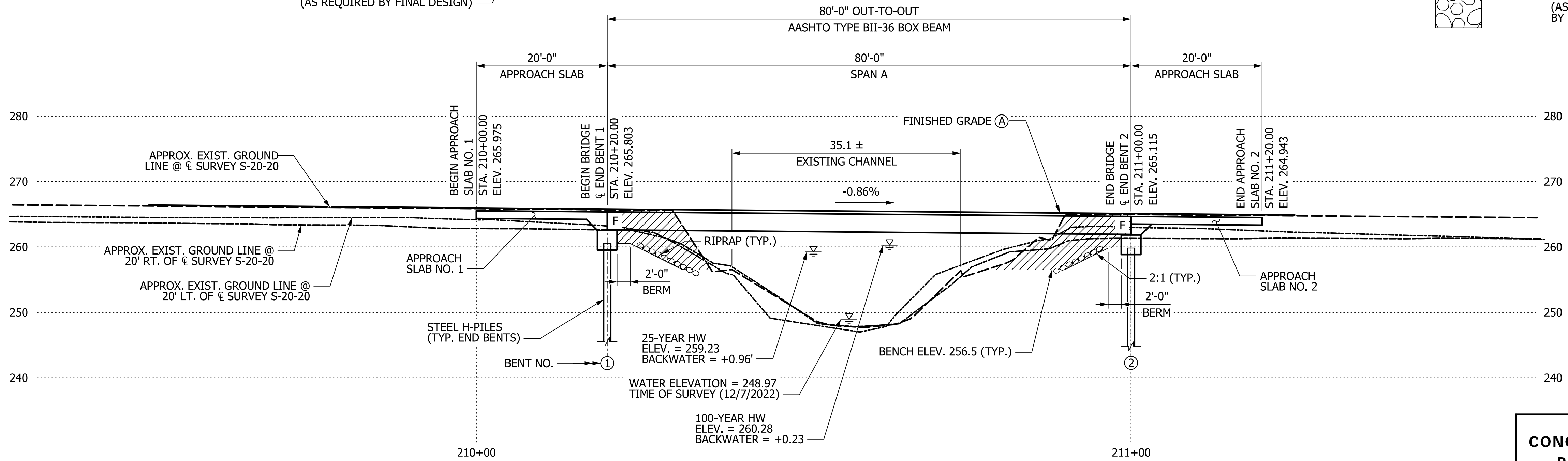


HYDROLOGY DATA

D.A. = 6.5 SQ. MILES
Q₂₅ = 1,550 CFS
VELOCITY₂₅ = 4.0 FPS
AREA FURNISHED UNDER₂₅ = 414.4 SQ. FT.
Q₁₀₀ = 2,230 CFS
VELOCITY₁₀₀ = 4.8 FPS
AREA FURNISHED UNDER₁₀₀ = 563.8 SQ. FT.

OVERTOPPING FLOOD

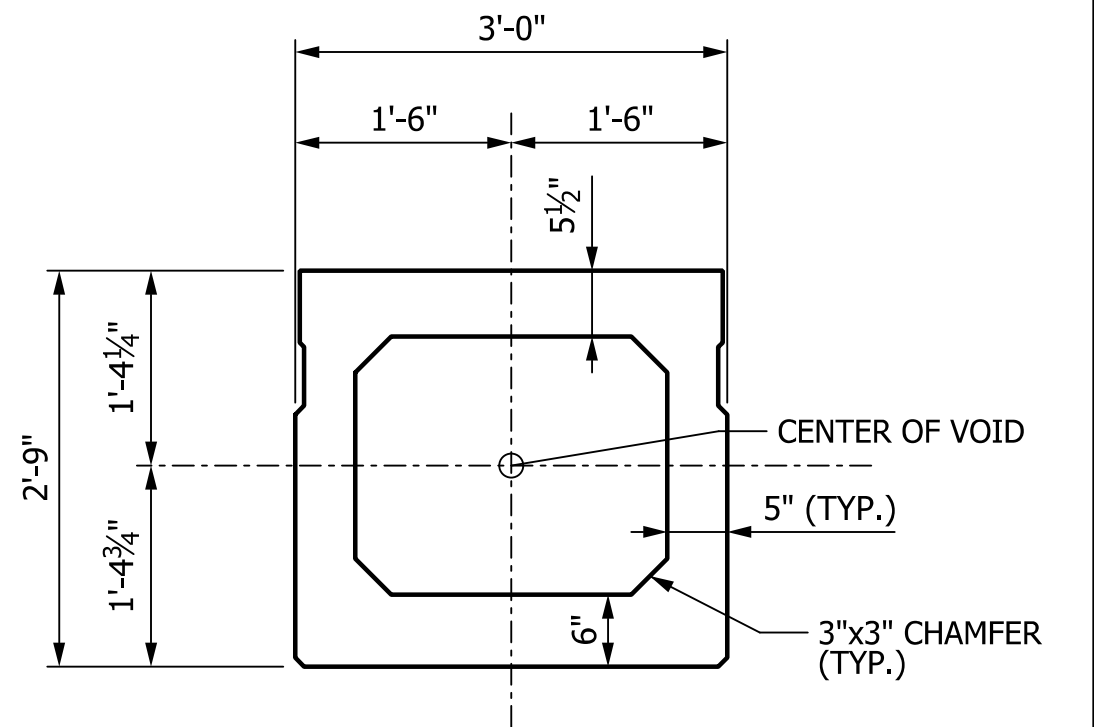
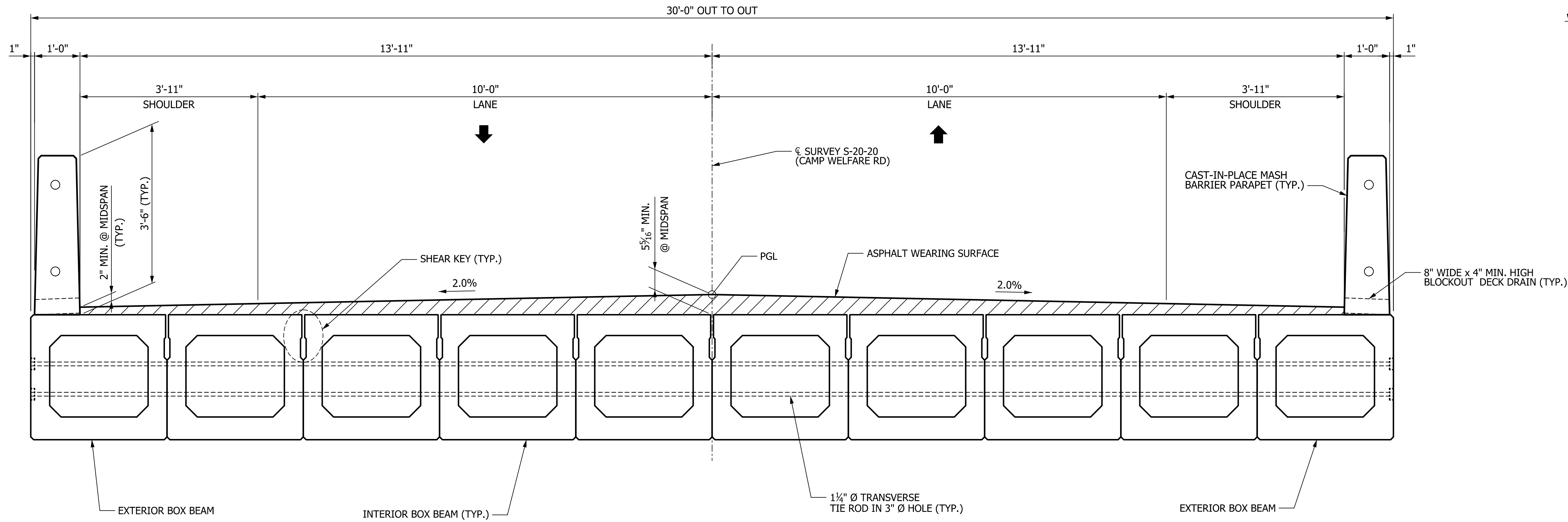
Q = 3,040 CFS
PROBABILITY 0.2%



SECTION ALONG SURVEY S-20-20

NOT FOR CONSTRUCTION				CONCEPTUAL PLANS				<div>HNTB</div> HNTB CORPORATION SC License No. 265 343 E. Six Forks Rd., Suite 200, Raleigh, N.C. 27609			
				REV.				SOUTH CAROLINA DEPARTMENT OF TRANSPORTATION			
				REV.							
				REV.				BRIDGE PLAN AND PROFILE S-20-20 (CAMP WELFARE ROAD) BRIDGE REPLACEMENT OVER HOGFORK BRANCH			
				REVIEWED							
QUAN.											
DR.	DLH	BJA	6/23	COUNTY FAIRFIELD				ROUTE S-20-20			
DES.											
	BY	CHK.	DATE								

NOT FOR
CONSTRUCTION



INTERIOR BOX BEAM SECTION

TYPICAL SECTION

(LOOKING IN DIRECTION OF STATIONING)

NOT FOR
CONSTRUCTION

CONCEPTUAL PLANS				HNTB HNTB CORPORATION SC License No. 265 343 E. Six Forks Rd., Suite 200, Raleigh, N.C. 27609	
REV.				SOUTH CAROLINA DEPARTMENT OF TRANSPORTATION	
REV.					
REV.					
REVIEWED				BRIDGE TYPICAL SECTION S-20-20 (CAMP WELFARE ROAD) BRIDGE REPLACEMENT OVER HOGFORK BRANCH	
QUAN.					
DR.	DLH	BJA	6/23		
DES.					
	BY	CHK.	DATE	COUNTY FAIRFIELD	ROUTE S-20-20